



Digital Photo Printer

CHC-S2145

High Speed Digital Photo Printer

The World Fastest

6.8 Seconds

for 6"x4" size

- Easy maintenance
- Media with IC tag
- Longer warranty
- High capacity 700 prints for 6"x4" size



World Fastest Printer Speed

Printing Speed is Approx. 6.8 sec level per print in 10 x 15cm/ 6" x 4" paper.
*In-house data of Shinko by comparison the Dye-sub printers available in the market as of April, 2006.

High Quality Print

Superior smear correction technology creates excellent crisp prints.
Print quality is almost same as the quality of the silver halide photo.

Robustness

Longer period of warranty program if required.

High Media Capacity

Releases from bothering media replacement process.
700 prints for 15 x 10cm(6" x 4")print

Compact & Light Weight

Tailored slim body and weight of 20kg.

Easy Maintenance

Front loading of paper and ribbon.
Simple mechanism of spare parts replacement.

Superior Smear Correction Technology

SHINKO achieves the fastest and best quality print.

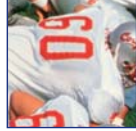


Current technology



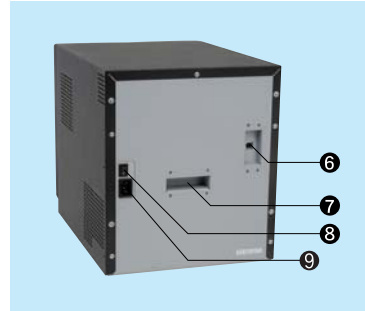
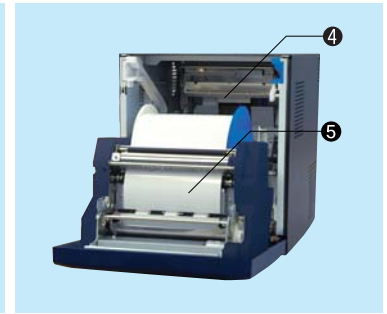
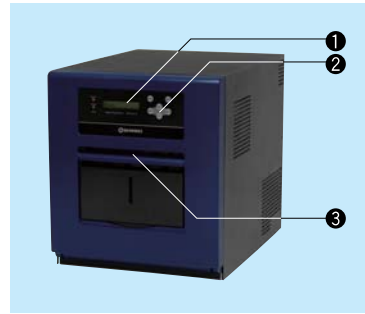
Smear exists.
There are colors over the white image.

New technology



No Smear.
No other colors over the white image.

General View



- ① Back light LCD
- ② Front panel
- ③ Paper ejection slot
- ④ Thermal head of easy cleaning
- ⑤ Paper
- ⑥ USB connector
- ⑦ Handle
- ⑧ Power switch
- ⑨ AC inlet

Specifications for S2145

| | |
|----------------------------|---|
| Model | CHC-S2145 |
| Print Method | Dye Sublimation Thermal Transfer |
| Printing Speed | 6.8 seconds/152mmx102mm(6" x 4")sheet print |
| Image Quality | Continuous Tone, 300dpi(Dual Line Print) |
| Paper Size Capacity | 700prints:152mm x 102mm(6" x 4") |
| | 310prints:152mm x 204mm(6" x 8") |
| | 310prints:152mm x 229mm(6" x 9") |
| | 790prints:127mm x 89mm(5" x 3.5") |
| | 400prints:127mm x 178mm(5" x 7") |
| Dimensions(mm) | 296(W) x 342(H) x 416(D) |
| Weight | 20kg/44lb(ribbon/paper are not included) |
| Power Supply | AC100-240V 50/60Hz |
| Power Consumption | 2.6A- 5.2A |
| Interface | USB2.0(High Speed) |
| Spool Memory | For additional one picture |
| Safety Standards | UL, cUL, CE |
| EMI | FCC ClassA, VCCI ClassA |
| RoHS | Comply |
| Printer Driver | Windows 2000/XP, Plug in DLL |

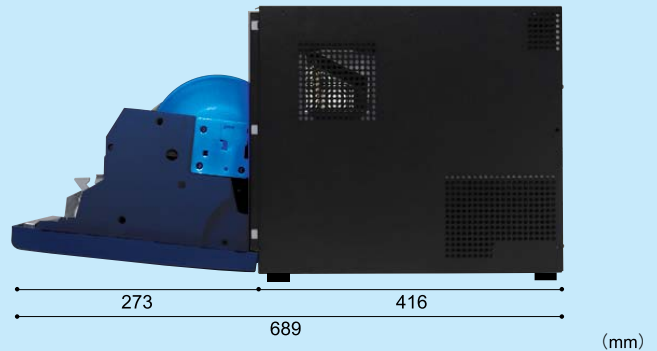
The above specifications are subject to change without notice.

Dimensions

FRONT



RIGHT SIDE



- Before use, read the instruction manual carefully to ensure safe operation.
- Do not position in wet, humid, dusty or smoky environments. This may result fire, breakdown or electric shock.

Website: <http://www.shinko-elec.co.jp/eng/printers.html>

- Company and product names in this catalog are registered trademarks.
- Due to technical upgrading, design and specifications are subject to change without notice.
- Images shown on screens or as prints are composites.



SHINKO ELECTRIC CO., LTD.

Shiba NBF Tower, 1-1-30 Shiba Daimon, Minato-ku, Tokyo 105-8564 Japan
Tel: +81-3-5473-1819 Fax: +81-3-5473-1844